

# New Travel Etiquette for Visitors

Thank you for your cooperation with Japan's infectious disease control measures.



Please refrain from traveling when you feel unwell.



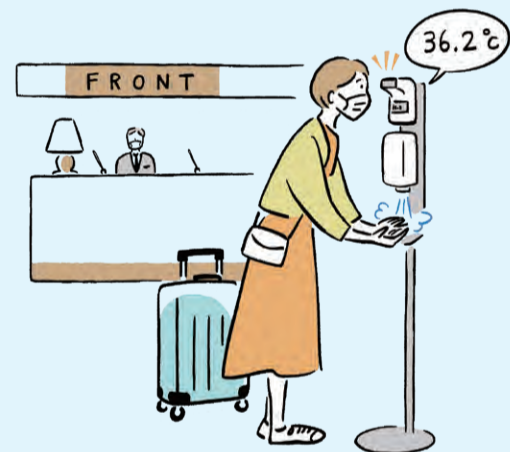
Please plan your trip during less crowded times.



Please practice preventive measures even if you are vaccinated.



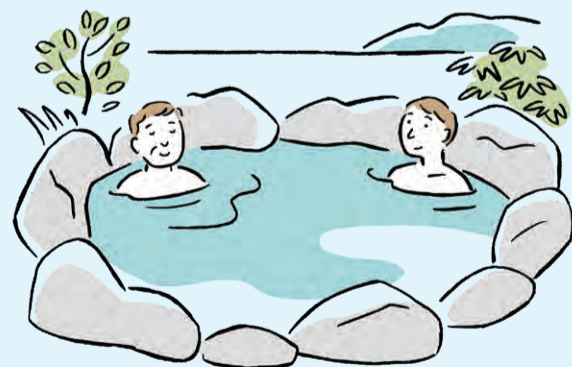
Please keep your conversation to a minimum when using public transportation.



Please check your body temperature and clean your hands at the entrance.



Please wear your mask when not eating or drinking.



Please refrain from talking when using public baths.